

**HIGH VOLTAGE, HIGH DENSITY, STANDARD  
RECOVERY MODULAR RECTIFIER ASSEMBLY**

**QUICK REFERENCE  
DATA**

- Up to 15kV reverse voltage
- Modular construction
- Low reverse leakage current
- High thermal shock resistance
- Provides design versatility

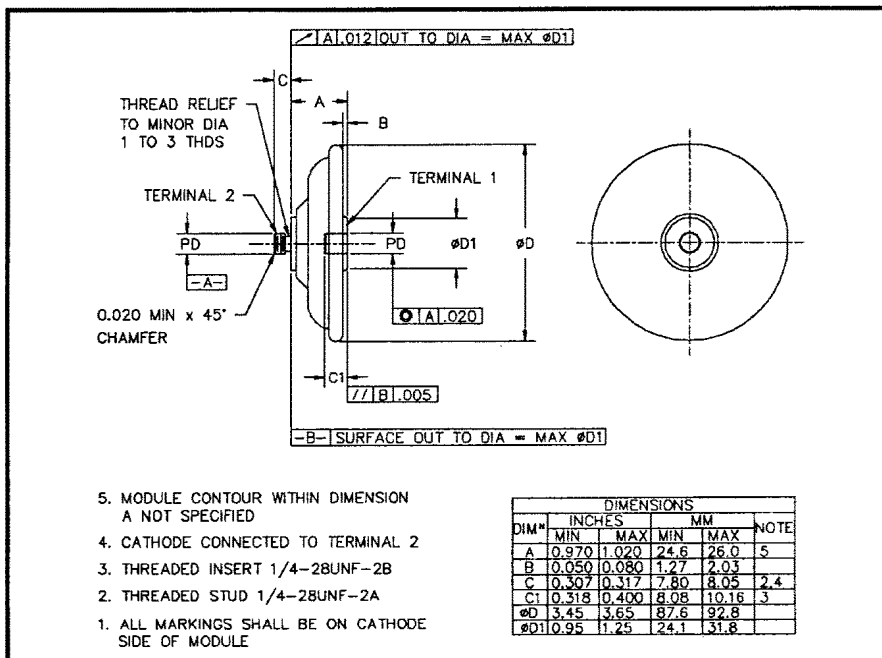
- $V_R = 2.5kV - 7.5kV$
- $I_F = \text{to } 8.5A$
- $I_R = 2.0\mu A$
- $I_{FSM} = 200A$

**ABSOLUTE MAXIMUM RATINGS**

Device Type	Working Reverse Voltage $V_{RWM}$	Rectified Current $I_F(AV)$			1 Cycle Surge Current $I_{FSM}$ $t_p = 8.3mS$ @ $T_{jMAX}$	$I^2t$ $t_p = 8.3mS$ @ $25^\circ C$
		Air @ $25^\circ C$	Air @ $100^\circ C$	Still oil @ $55^\circ C$		
		Volts	Amps	Amps		
S2HVS2.5	2500	5.5	3.1	8.5	200	150
S2HVS5	5000	4.4	2.4	6.8	200	150
S2HVS7.5	7500	3.2	1.7	5.1	200	150

6

**MECHANICAL**





**ELECTRICAL CHARACTERISTICS**

Device Type	Maximum Reverse Leakage Current $I_R$ @ $V_{RWM}$		Maximum Forward Voltage $V_F$ @ 5.0A @ 25°C	Maximum Reverse Recovery Time <sup>1</sup> $t_{rr}$ @ 25°C
	@ 25 °C	@ 100 °C		
	µA	µA	Volts	µS
S2HVS2.5	2.0	20	3.5	5.0
S2HVS5	2.0	20	5.8	5.0
S2HVS7.5	2.0	20	9.2	5.0

1. Measured on discrete devices prior to assembly

Operating temperature range    -55 °C to +150 °C  
Storage temperature range       -55 °C to +150 °C

6

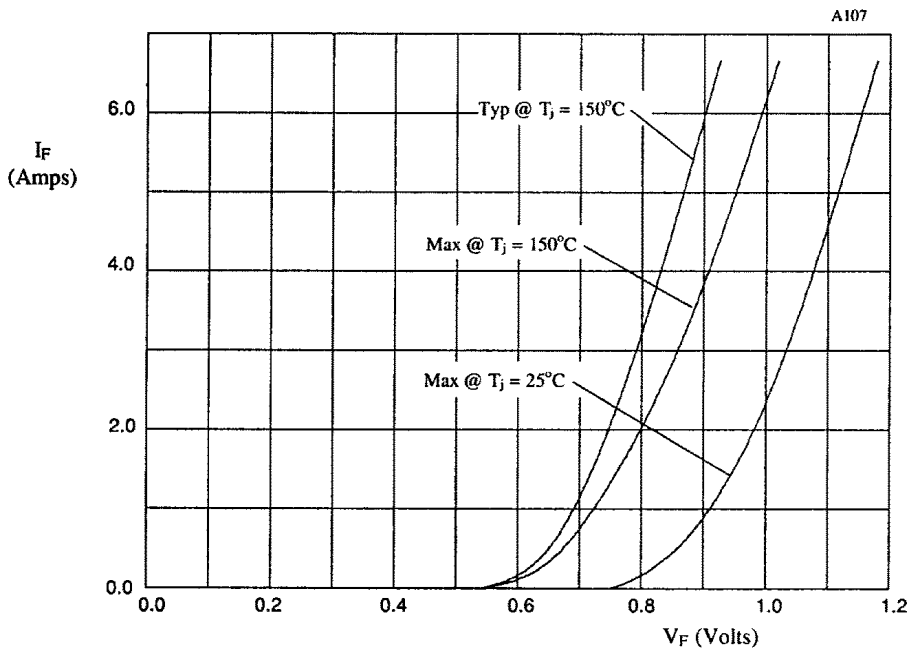


TABLE 1

DEVICE	X-axis
S2HVS2.5	x3
S2HVS5	x5
S2HVS7.5	x8

Figure 1. Forward voltage drop as a function of forward current for use with table 1.