

POWER DISCRETES

Description

Quick reference data

$$V_R = 800 \text{ \& } 1000V$$

$$I_F = 1.8A$$

$$t_{rr} = 300nS$$

$$I_R = 1\mu A$$

Features

- ◆ Low reverse recovery time
- ◆ Glass passivated for hermetic sealing
- ◆ Low switching losses
- ◆ Soft, non-snap off, recovery characteristic
- ◆ Avalanche capability

Absolute Maximum Ratings

Electrical specifications @ $T_A = 25^\circ C$ unless otherwise specified.

	Symbol	PF8	PF0	Units
Working Reverse Voltage	V_{RWM}	800	1000	V
Repetitive Reverse Voltage	V_{RRM}	800	1000	V
Surge Reverse Voltage	V_{RSM}	900	1100	V
Average Forward Current @ $55^\circ C$, lead length 0.375"	$I_{F(AV)}$	1.8		A
Non-Repetitive Surge Current ($t_p = 8.3mS$ @ V_R & T_{JMAX})	I_{FSM}	50		A
Storage Temperature Range	T_{STG}	-55 to +175		$^\circ C$

POWER DISCRETES
Electrical Specifications

 Electrical specifications @ $T_A = 25^\circ\text{C}$ unless otherwise specified.

	Symbol	PF8/PF0	Units
Average Forward Current max. (pcb mounted)	$I_{F(AV)}$	0.85	A
Average Forward Current max. L = 10mm	$I_{F(AV)}$	1.8	A
Forward Voltage Drop max. @ $I_F = 1.5\text{A}$, $T_J = 25^\circ\text{C}$	V_F	1.35	V
Reverse Current max. @ V_{RWM} , $T_J = 25^\circ\text{C}$ @ V_{RWM} , $T_J = 100^\circ\text{C}$	I_R I_R	1 15	μA
Reverse Recovery Time max. 0.5A I_F to 1.0A I_{RM} recovers to 0.25mA $I_{RM(REC)}$	trr	300	nS
Junction Capacitance typ. @ $V_R = 5\text{V}$, $f = 1\text{MHz}$	C_j	18	pF

Thermal Characteristics

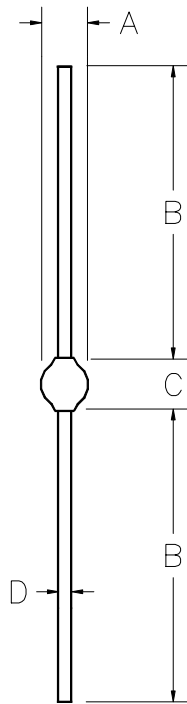
	Symbol	PF8/PF0	Units
Thermal Resistance-Junction to Lead Lead length = 0" Lead length = 0.375"	$R_{\theta JL}$	19 47	$^\circ\text{C/W}$

POWER DISCRETES
Ordering Information

Part Number	Description
PF8/PF0	Axial leaded hermetically sealed ⁽¹⁾

Note:

(1) Available in bulk and tape and reel packaging. Please consult factory for quantities.

Outline Drawing


Dimensions					
DIM ^N	Inches		Millimeters		Note
	MIN	MAX	MIN	MAX	
A	-	0.150	-	3.81	-
B	1.014	-	26	-	-
C	-	0.180	-	4.57	-
D	-	0.032	-	0.82	-

Weight = 369mg